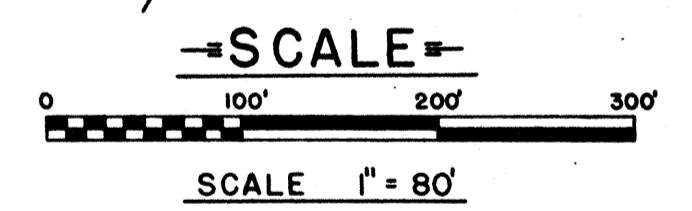
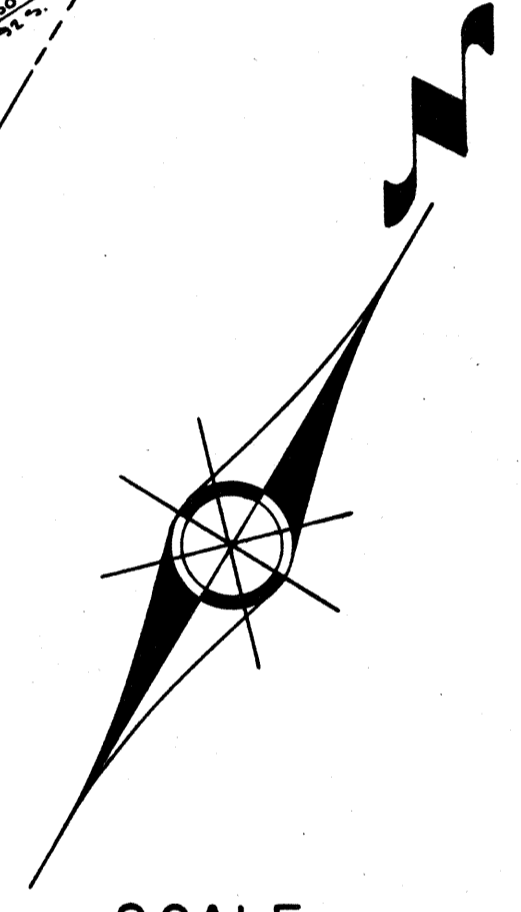
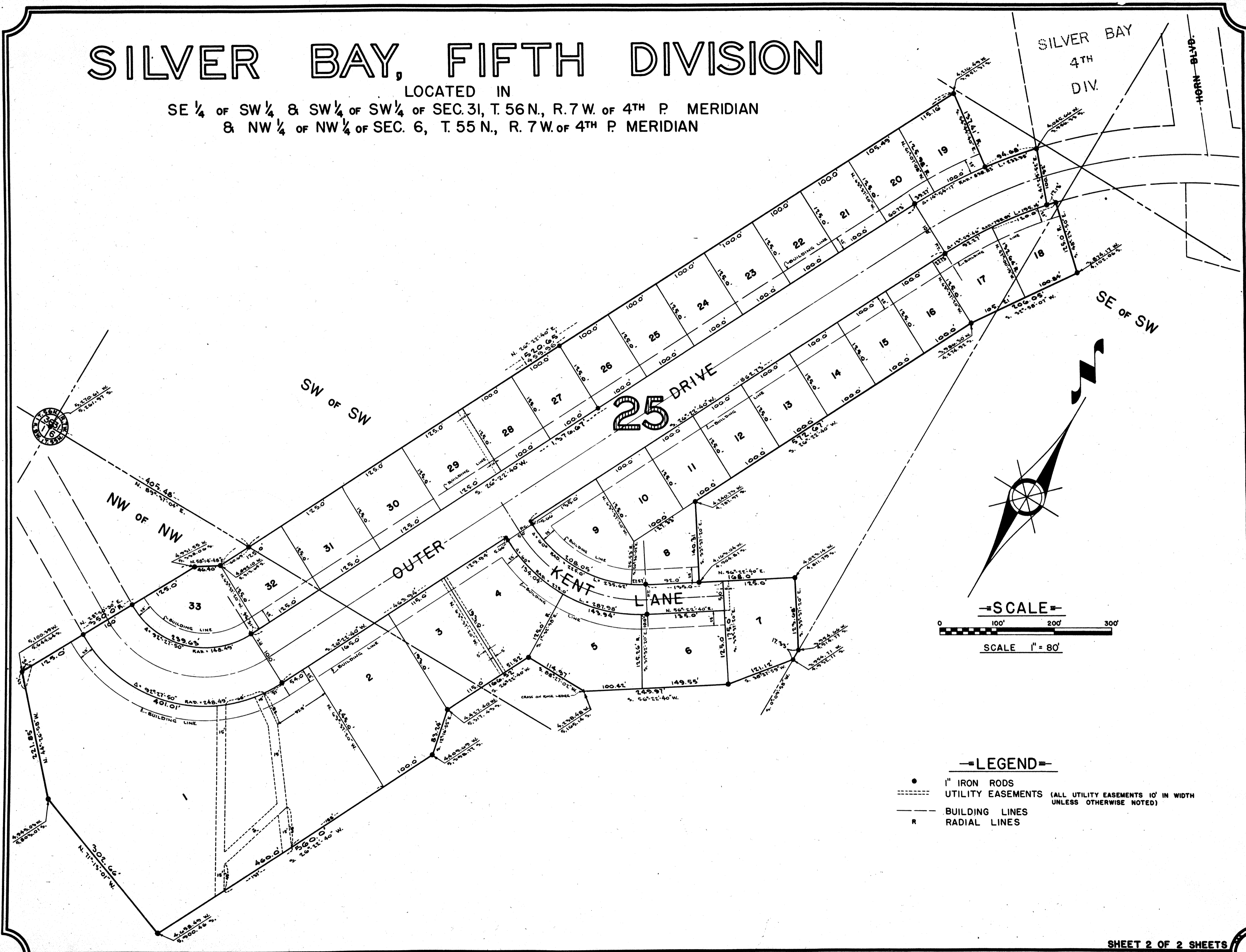


SILVER BAY, FIFTH DIVISION

LOCATED IN
 SE 1/4 OF SW 1/4 & SW 1/4 OF SW 1/4 OF SEC. 31, T. 56 N., R. 7 W. OF 4TH P. MERIDIAN
 & NW 1/4 OF NW 1/4 OF SEC. 6, T. 55 N., R. 7 W. OF 4TH P. MERIDIAN



—LEGEND—

- 1" IRON RODS
- UTILITY EASEMENTS (ALL UTILITY EASEMENTS 10' IN WIDTH UNLESS OTHERWISE NOTED)
- BUILDING LINES
- R RADIAL LINES