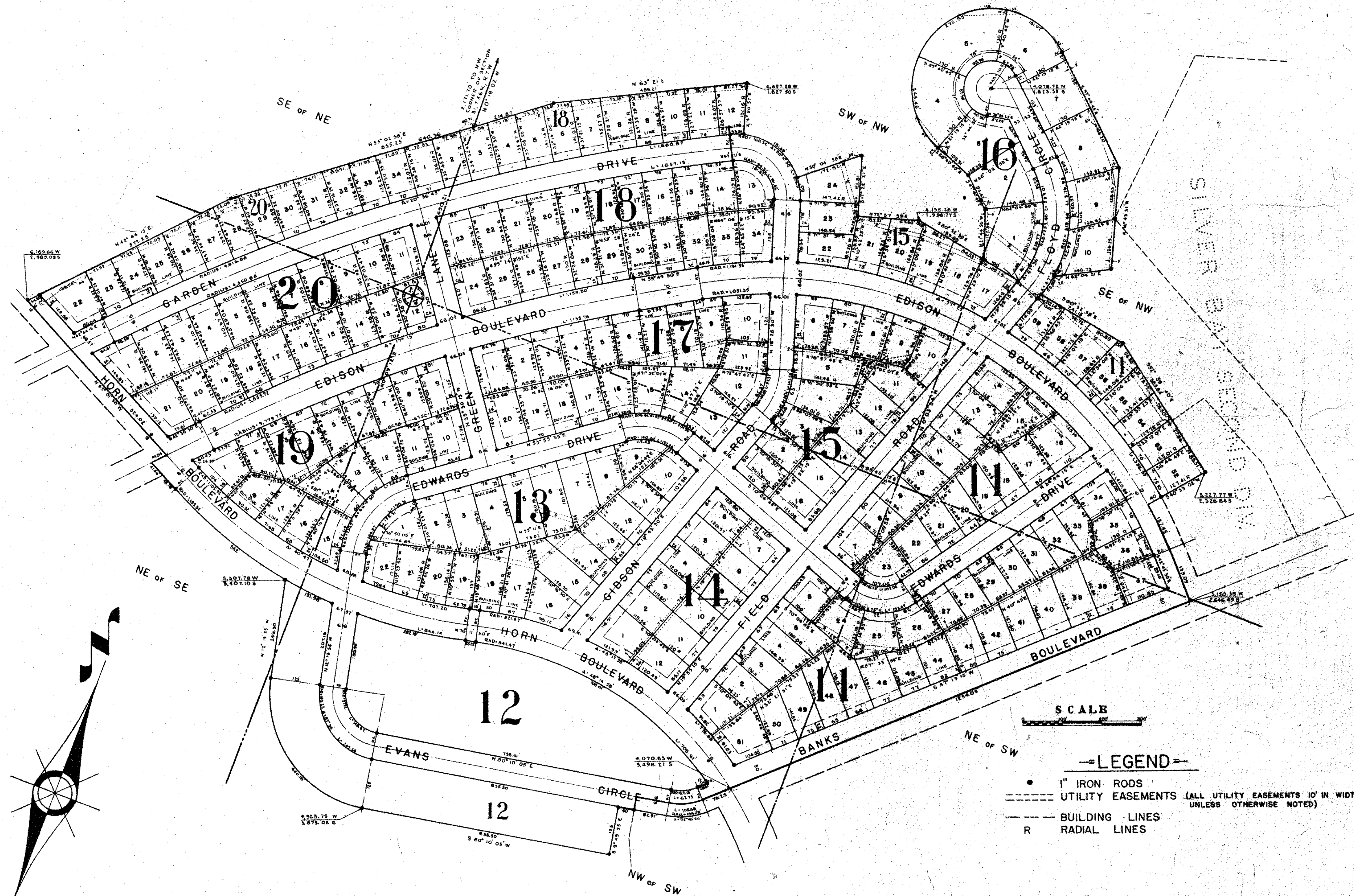


SILVER BAY, THIRD DIVISION

LOCATED IN

N 1/2 OF SW 1/4 & S 1/2 OF NW 1/4 SEC. 31, TWP. 56 N, RANGE 7 W. OF 4TH PRINCIPAL MERIDIAN
& SE 1/4 OF NE 1/4 & NE 1/4 OF SE 1/4 SEC. 36, TWP. 56 N, RANGE 8 W. OF 4TH PRINCIPAL MERIDIAN



SCALE

—LEGEND—

- 1" IRON RODS
- UTILITY EASEMENTS (ALL UTILITY EASEMENTS 10' IN WIDTH UNLESS OTHERWISE NOTED)
- BUILDING LINES
- R RADIAL LINES

Townsite 300m Lot 2
MAY 1913